



DAWSONDOWNIELAMONT



DAWSONDOWNIELAMONT

Typical Applications

- Slops Oil Transfer
- Hydrocarbons
- Pump out Pumps
- Slops feed
- Condensate Pump
- Main Flare KO Drum Pump
- Blowdown Pump
- Asphalt Residue
- Deparaffinating
- Flare Seal Pump
- Hot Oil Pump
- Sump Pump
- Vacuum Residue Feed



Visit our website and download our **FREE** conversion tool

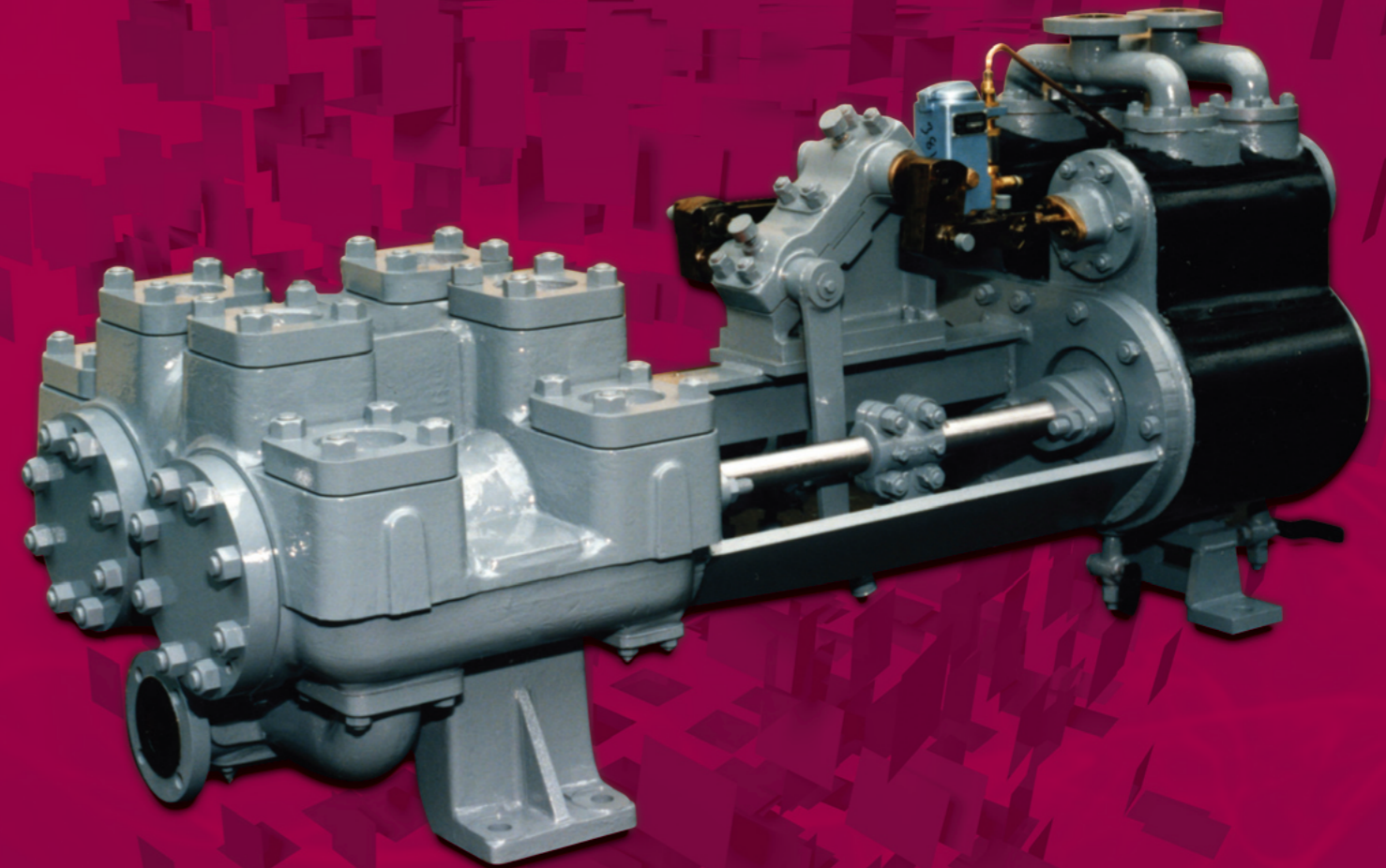
DDL
Convert 123

[click to download →](#)



www.ddl-ltd.com

STEAM DRIVEN PUMPS



DAWSON DOWNIE LAMONT
Unit 31 Rutherford Road
Southfield Industrial Estate
Glenrothes
Fife
KY6 2RT

t: +44 (0) 1592 775 577

f: +44 (0) 1592 775 517

e: sales@ddl-ltd.com

www.ddl-ltd.com

the **complete** package



Steam Driven Pumps

DAWSONDOWNIELAMONT

INTRODUCTION

Dawson Downie Lamont specialises in the design and manufacture of Direct Acting Steam/Gas Driven Reciprocating Pumps for use within the Oil & Gas, Petrochemical and Marine Industries.

With over 100 years design and manufacturing experience, Dawson Downie Lamont offers a comprehensive range of Direct Acting Steam/Gas Driven Reciprocating Pumps to suit the most arduous applications. Dawson Downie Lamont Steam Driven Pumps are designed, manufactured and tested in accordance with API 674 and the Hydraulic Institute standards. Each pump is of a bespoke design to meet the required operating conditions and is available in a variety of materials to ensure compatibility with the pumping medium.

Direct Acting Steam Driven Pumps are suited for use in hazardous areas such as oil refineries, petrochemical plants etc. They are ideal for very arduous applications as these pumps operate at low speed to reduce wear and pressure pulsations. They are also most suited to applications involving high liquid temperatures and low available NPSH.

DESIGN FEATURES

- Self Priming
- Solids Handling Capability
- Powered by High Pressure, Medium Pressure, Low Pressure or process exhaust steam
- Intrinsically safe, most suitable for use in hazardous areas.
- Suitable for pumping liquids of variable viscosity and temperature
- Variable Output from zero to maximum capacity.
- Pumps available in a variety of materials to ensure compatibility with the pumping medium
- Light Weight Disc Valves incorporated for low NPSH requirements
- Designed in accordance with API 674 and the Hydraulic Institute
- Flange ratings to suit customer requirements
- Water cooled stuffing boxes are fitted for elevated pumping temperatures and process liquids with low specific gravity
- Steam jacketed liquid ends utilised for liquids with high viscosity

To find your nearest agent visit our website at www.ddl-ltd.com or contact our international headquarters on +44 (0) 1592 775577 or email sales@ddl-ltd.com

PUMP TYPE

DUPLEX & SINGLEX SIDE POT
Suitable for higher discharge pressure and higher temperature applications.

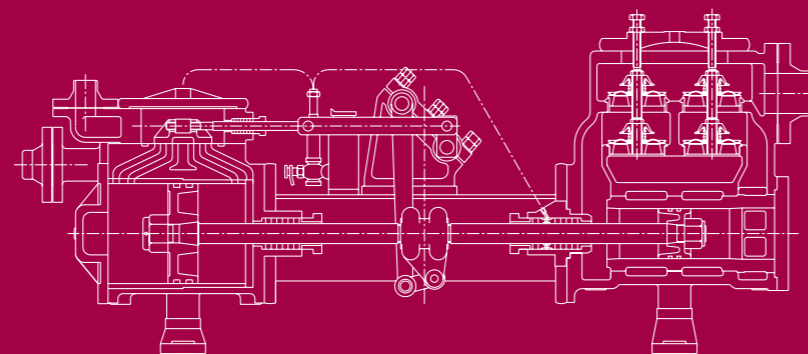
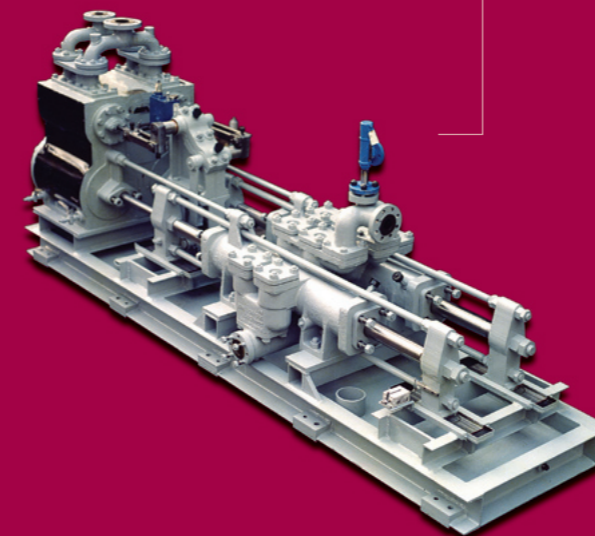
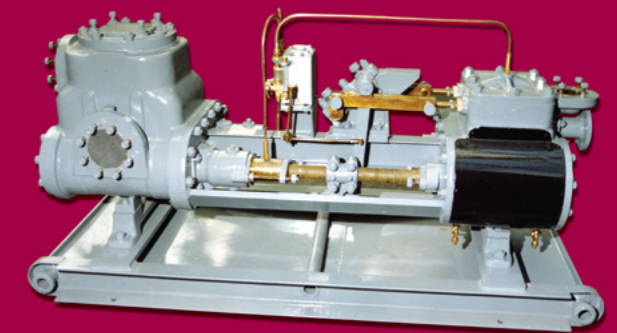
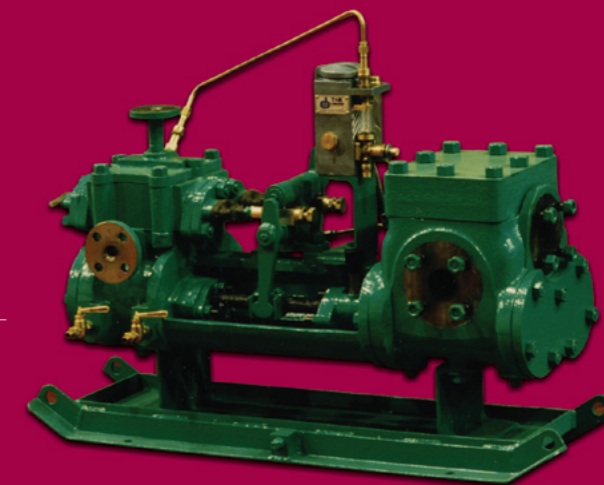
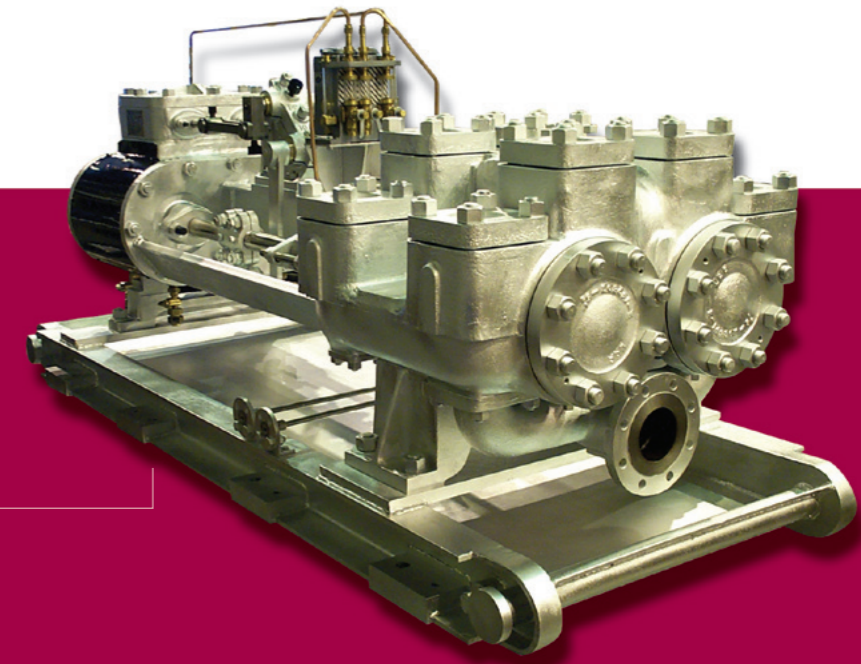
Discharge Pressures up to 52 Bar, flow rates up to 80 m3/hr.

DUPLEX CAP & VALVE
Suitable for a variety of general refinery process duties requiring low to medium discharge pressures.

Discharge Pressures up to 24 Bar, flow rates up to 250 m3/hr.

OUTSIDE RAM TYPE
Suitable for Hydraulic and High Pressure Injection service. Specially designed with suitable load ratio to generate high discharge pressure many times greater than the effective pressure of the motive Steam/Gas.

Discharge Pressures up to 172 Bar, flow rates up to 15 m3/hr.



A Typical Steam Pump Section Drawing

